

Maintenance:

Typical maintenance of the Solaris is recommended replacement of the UVC Lamp every 18,000 hours approximately 2 years, for optimum results change lamps every year. UV lamps undergo a photochemical process during operation. This slowly reduces the amount of UV light generated to disinfect against airborne pathogens.

Important:

When installing new lamps, ensure that the lamp glass is free from any fingerprints or debris, as this may alter the path of the UV energy. Use rubbing alcohol and a dry cloth to remove any surface contaminants.

Replacement Lamp Log Sheet:

Included with the product is a replacement lamp log sheet. It is provided as a label so it can be attached near the installation to ensure lamp replacements are being tracked.

Replacement Lamp Part Numbers:

10" Spectrum Lamp for use in the PCO reactor chamber....AS-IH1013/SLX-RL-PCO10

Warranty:

Ultravation® Solaris features Ultravation's lifetime warranty, with the exception of the ultraviolet lamp(s), which are warranted for a period of two years after date of consumer purchase.

This warranty does not include damage to the unit from accident, misuse or improper installation.

If this product should become defective, Ultravation will elect to repair or replace the product free of charge. Ultravation will return repaired or replaced warranted products pre-paid to the customer, provided that the product was delivered pre-paid.

Ultravation shall have no responsibilities for charges incurred by the customer for installation or removal of warranted items. Liability is limited only to the replacement or repair of this product.

This warranty gives you specific legal rights, and you may also have other rights, which vary from state to state. All returns must be accompanied by a return authorization number, which may be obtained by contacting Ultravation, Inc.

Ultravation, Inc.

P.O. Box 165, 212 Ideal Way, Poultney, Vermont 05764

Phone: 1-866-GO-UV-AIR (468-8247) • Fax: 802-287-9203

www.ultravation.com • info@ultravation.com

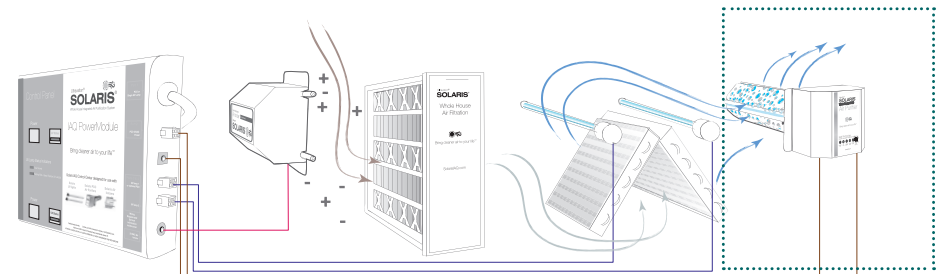
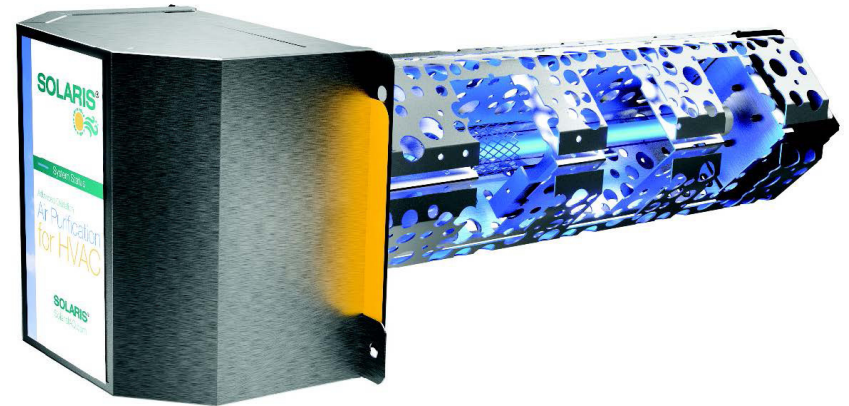
Copyright © 2018 Ultravation Inc.



Installation and Owners Manual

Model # SLX-AAL-PCO

*Whole House Air purifier with adjustable advanced
oxidation combined with 4x high output Plasma
generation.*



PhotoCatalyst component for HVAC
for use with Solaris IAQ Module
(SLX-PowerPro-3-120)

Package Contents:

- Solaris photo catalyst module.
- Four self tapping screws
- 24VAC Power cord (attached)
- UVC warning label
- Replacement lamp log sheet
- Warranty card
- Ductboard plate / sealing tape
- Product gasket

Safety Precautions:

It is recommended that this unit be installed and maintained by a trained technician.

WARNING: UV Hazard. Always protect eyes from ultraviolet light. NEVER look at UV lamps in operation. Unplug or disconnect power before re-lamping or servicing.

WARNING: Severe eye damage or temporary blindness may occur.

WARNING: DO NOT operate outside of air handler. Mount product in preferred location first.

WARNING: No openings should be allowed which would give direct line-of-sight to the UV light.
Note: In the event of accidental breakage or replacement of the ultraviolet lamp, please ensure that the lamp is disposed of in accordance with local and state environmental laws regarding fluorescent lamps containing mercury.

Notice: All wiring inside of the air handler in direct line of site of the UV lamp must be shielded with aluminum foil tape or equivalent non-combustible material. When installing this unit, select a mounting location that prevents ultraviolet light exposure to synthetic or other plastic components with unknown resistance to ultraviolet light. Ultraviolet light may cause color shift or structural degradation of plastic internal components.

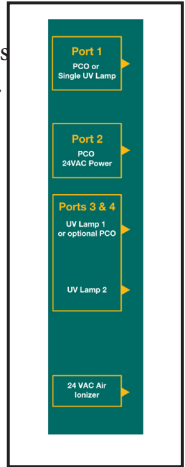
Mechanical installation

1. Determine a location for the Solaris system. Mount the unit on the exit or supply side of the HVAC system and before the ductwork branches off.
2. Separate the module cover from the mounting plate.
3. Note the orientation of the power module as it connects in only one direction.
4. Mark a 4" round opening (or use the end of the PCO chamber to mark the area) on the air duct and cut the hole needed for the insertion of the advanced photocatalytic chamber.
5. (optional) attach supplied gasket over PCO module and attach to mounting plate. (Seals against air duct.)
6. Insert the mounting plate / PCO module into opening and attach to duct with two supplied self-tapping screws in the lower left and upper right (only).
7. Adjust purification level. (See next page);
8. plug the lamp connector on to the lamp (note: the pattern of the lamp pins is a rectangle not a square)
9. Place the module cover on the unit aligning holes in tabs with holes in mounting plate (upper left /lower right).
- 10.. Secure the power module to the mounting plate with the remaining two self-tapping screws.

Installation

This product must be connected to a Solaris IAQ Module to operate.

1. Disconnect power supply before beginning installation to prevent electrical shock or equipment damage.
2. plug the two leads from the photocatalytic module to the proper ports
- 3.. Check installation and reconnect power supply for proper operation.



Adjusting the Purification level

The Solaris is a universal air purifier with a patented design that provides adjustability to the advanced photocatalytic process for a variety of treated space sizes. When setting up your equipment, adjust the purification level (under electronics cover) to the appropriate position based on the square footage. Fine adjustments may be required depending upon household living characteristics.

Lamp Replacement Procedure:

The UV lamp is shipped installed in the equipment and should be replaced during an annual service. To replace the UV lamp follow the steps below:

1. Unplug power cord and remove power module. (See Fig. 1)
2. Note the position of the Photon Clarifier and pull adjustment bar to its full-out position. (See Fig. 2)
3. Remove lamp screws and pull lamp out of PCO module. (See Fig. 3)
4. Install new lamp and fasten with lamp screws.
5. Set the Photon Clarifier to its noted setting.
6. Place the power module on the unit and fasten.
7. Plug in power cord.



Fig. 1



Fig. 2



Fig. 3